

Modernising St Bride's Primary School

Delivering a bright future for St Bride's pupils, through a major extension of the primary school



CGI of the Windsor Avenue Site and proposed set-down area.

Welcome

Welcome to the public information event outlining proposals to extend and modernise St Bride's Primary School

We are seeking your feedback on these draft proposals. Your feedback is important to us and will help to inform how the proposals develop.

Why Hold this Event?

The purpose of this event is to share our proposals as part of a formal pre-application community consultation process, prior to the submission of a full planning application to Belfast City Council.

About St Bride's Primary School

St Bride's is a Catholic School which has been serving the community in South Belfast since 1902. It offers two nursery classes and four classes in years 1-7. It is based across two sites on Derryvolgie Avenue and Windsor Avenue.



Derryvolgie: Existing site photo

Feedback

We want to hear from you and would welcome your views on the proposals. We will use your feedback to shape our proposals and inform the future planning application. All comments and feedback will be summarised and responded to in a Pre-application Community Consultation Report. This report will be submitted alongside the planning application.

For more information or to provide feedback on our plans, please contact:



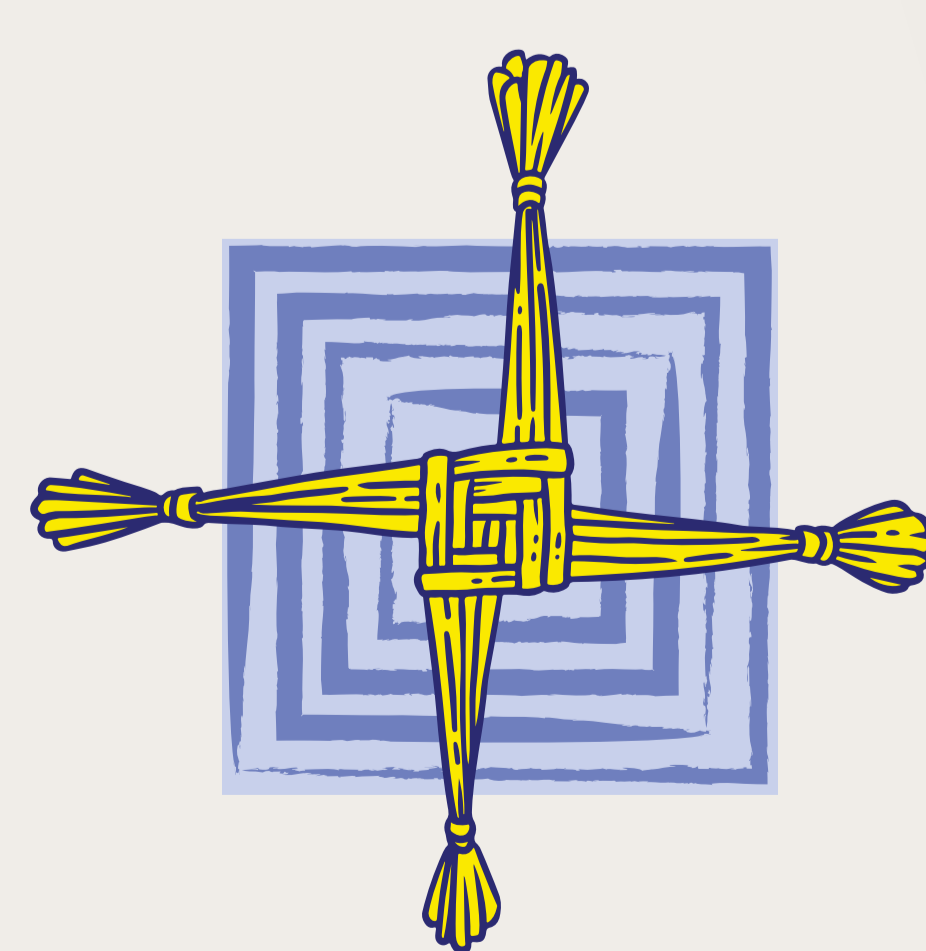
**Turley, Hamilton House,
3 Joy Street,
Belfast, BT2 8LE**



0808 1688 296



contact@stbridesconsultation.co.uk



ST BRIDE'S
PRIMARY SCHOOL

Modernising St Bride's Primary School

Delivering a bright future for St Bride's pupils, through a major extension of the primary school



Our Proposals

The proposals would see the existing school partly demolished. 2 existing classrooms would be refurbished and the existing school building would be extended. A new, single-story building would be constructed, to provide 8 new classrooms with ancillary support accommodation. The proposed new buildings have been designed to respect the architectural style of the existing school and the wider character of the Malone Conservation Area.

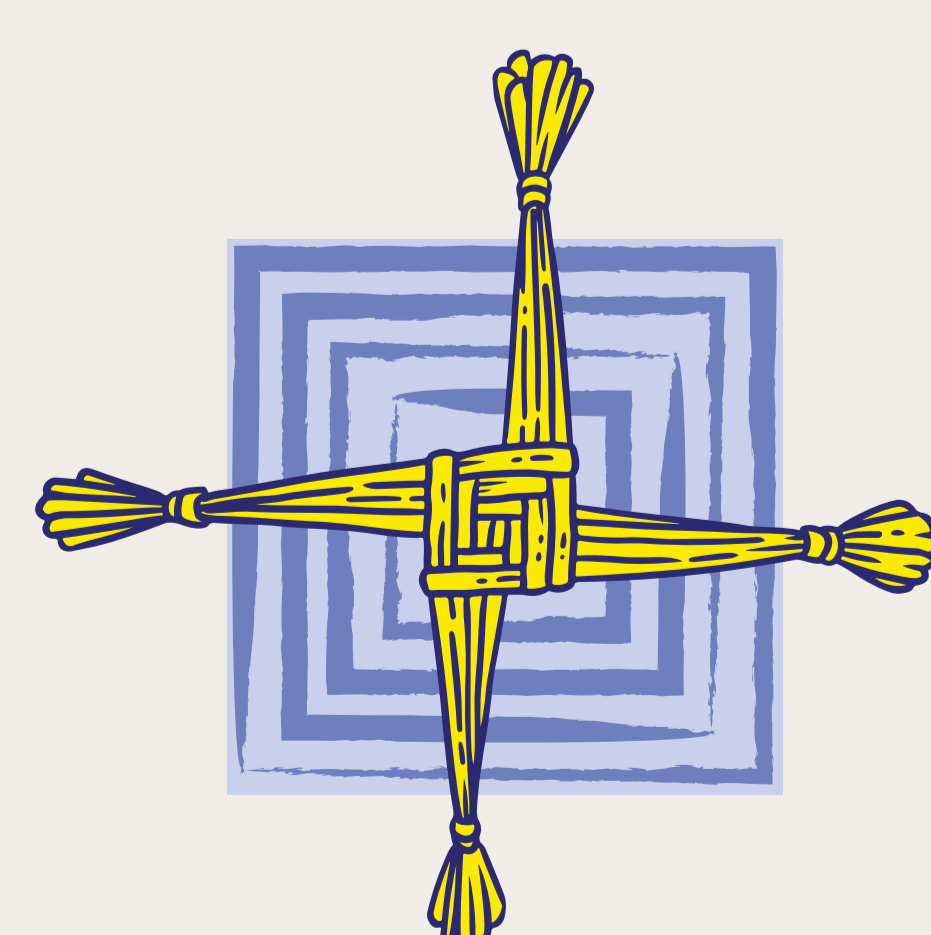
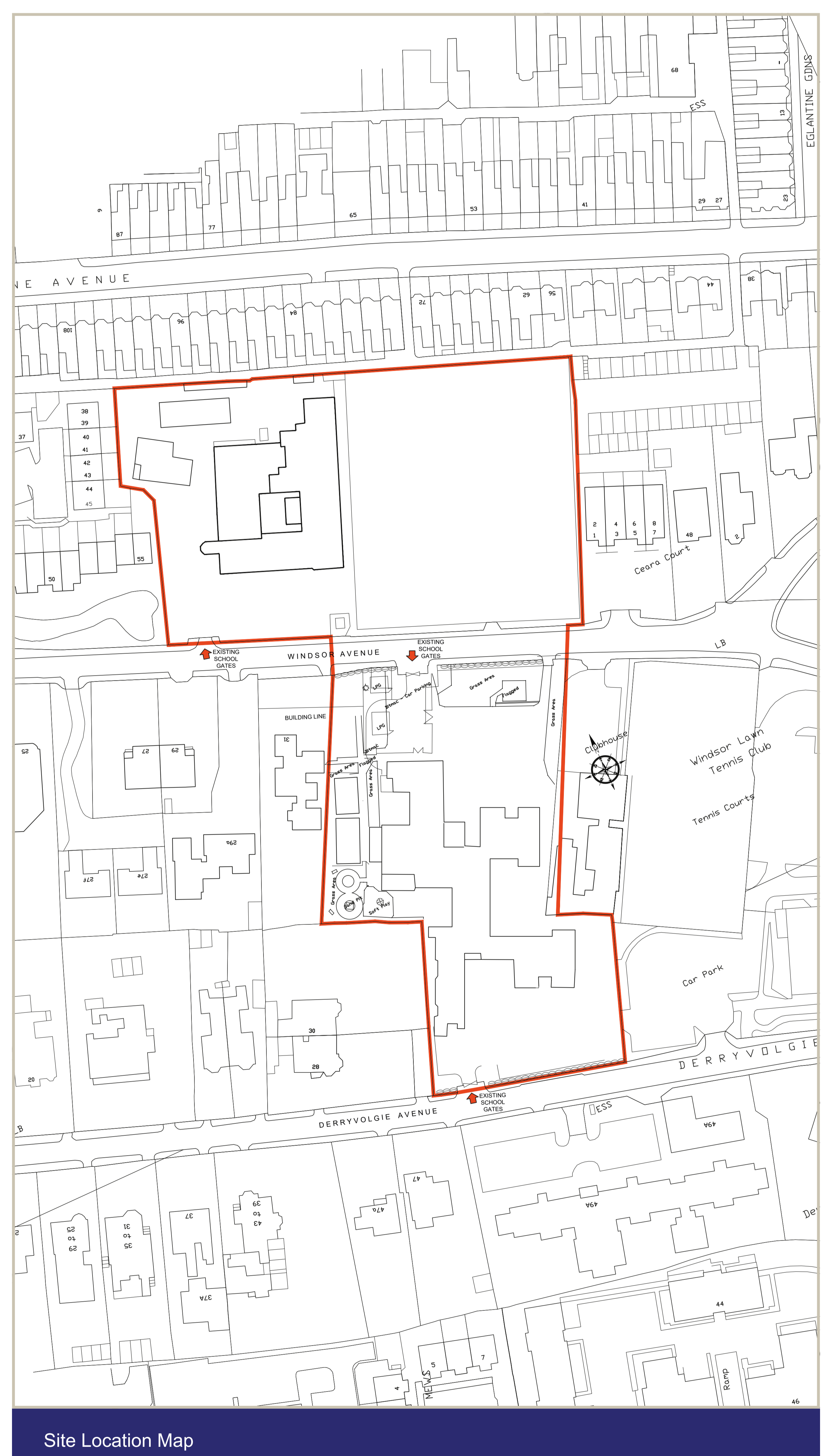
The proposals would also see the creation of a new off-road drop-off area, accessible from Windsor Avenue, as well as alterations to the existing car parking and hard play areas.

Why these proposals?

The present school was developed in 1974 and, while expansion has taken place since then, more space is needed to meet the current standards of classroom size and associated facilities. This development is intended to bring the school up to the highest modern standards, so we can keep giving our pupils the best possible start.

A Better, Safer Traffic Management Solution

As part of this development, we are proposing to move the current set-down/ pick-up area from Derryvolgie to Windsor Avenue and create a new, dedicated, off street area for parents to drop off their children. This new solution will reduce the impact our school has on traffic in the area and will offer substantial improvements in terms of pupil safety.



ST BRIDE'S
PRIMARY SCHOOL

Modernising St Bride's Primary School

Delivering a bright future for St Bride's pupils, through a major extension of the primary school

The Design

Modernising the School

The central design consideration was creating a modern school to meet the educational needs of St Bride's pupils.

The current buildings do not meet the standards set out in the Department of Education School Building Handbook. This sets out clear expectations in terms of classroom sizes and associated facilities, in order to create the ideal conditions for learning. Bringing the school up to these standards will complement the already excellent teaching standards to give our pupils the best possible start.

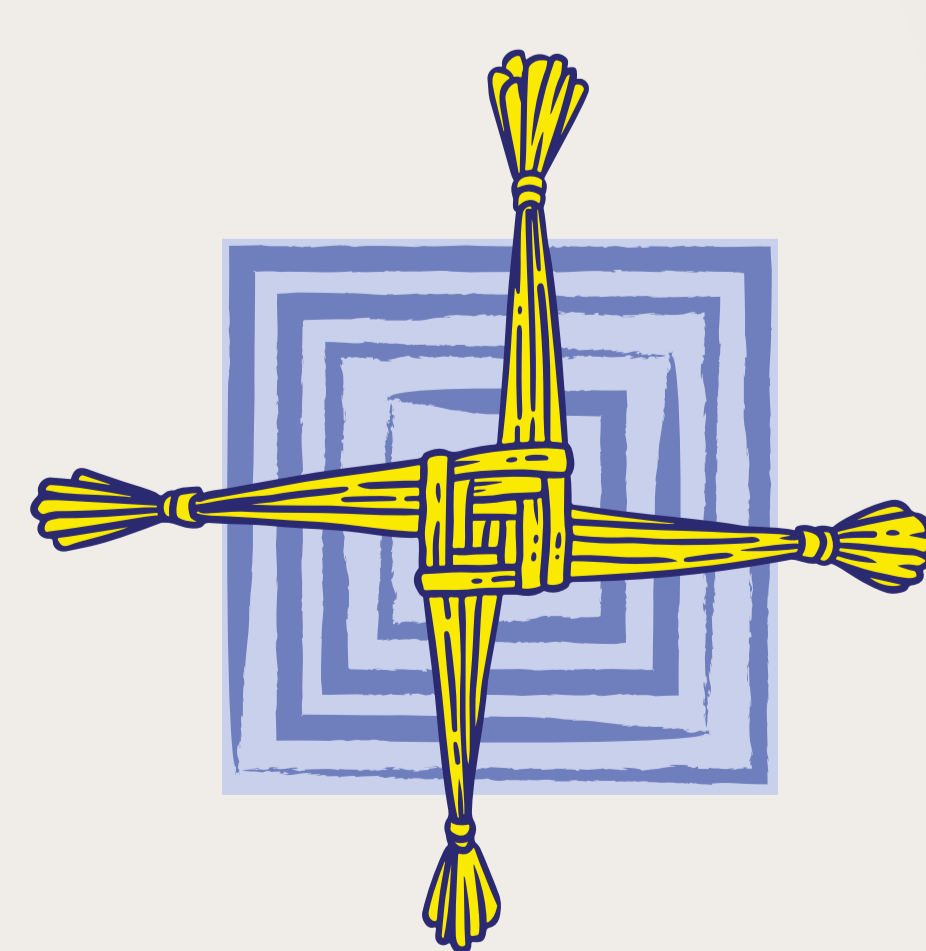
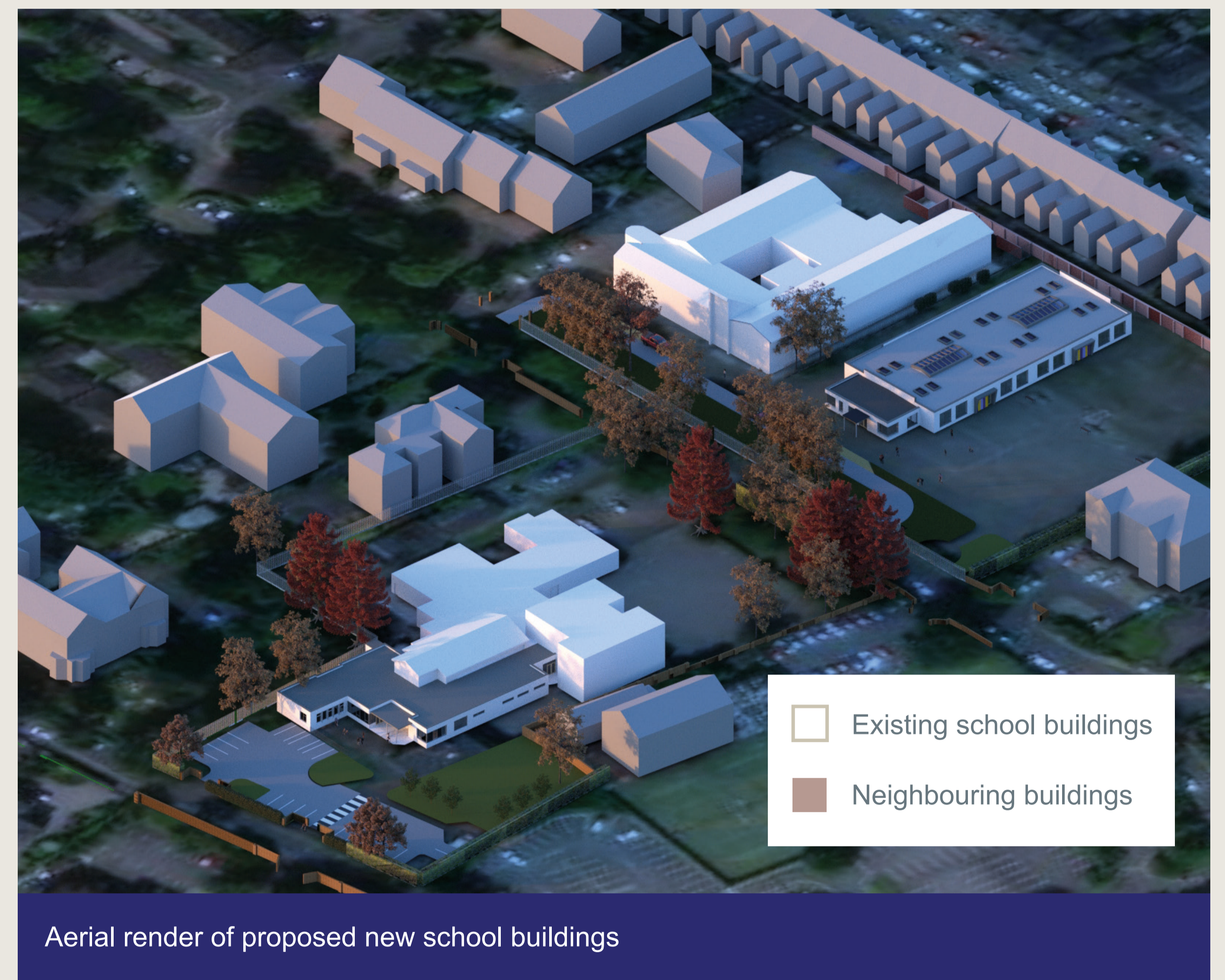
The new buildings will also meet current Building Control and Disability Discrimination Act standards, to ensure all our pupils have a safe, accessible environment in which to learn.

Ensuring Educational Continuity during Construction

Our project team and the school have carefully developed a plan to ensure that our pupils' education isn't disrupted when building works commence. We plan to build the new classroom block on Windsor Avenue first. Pupils' tuition will then be moved into these classrooms while works on the Derryvolgie site are completed.

A Green and Leafy School Campus

The new school will see an increase in green spaces and trees, softening the buildings' context and maintaining the feel of a South Belfast tree-lined avenue.



ST BRIDE'S
PRIMARY SCHOOL

Modernising St Bride's Primary School

Delivering a bright future for St Bride's pupils, through a major extension of the primary school

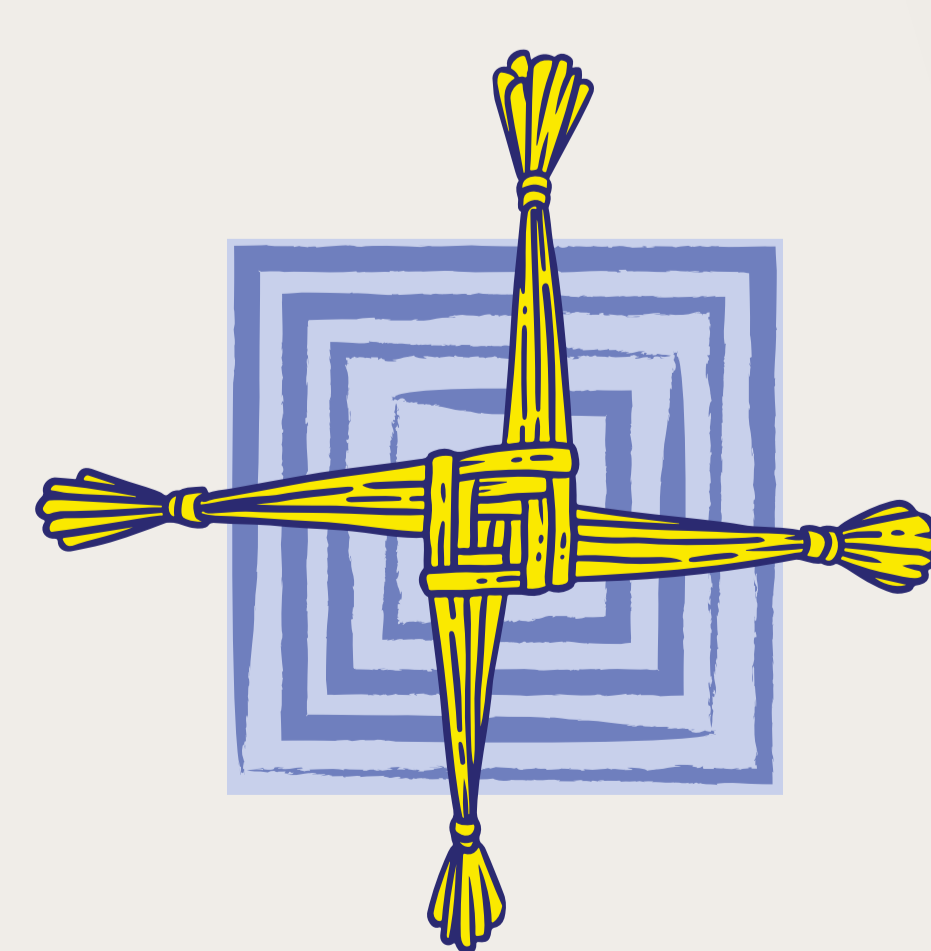
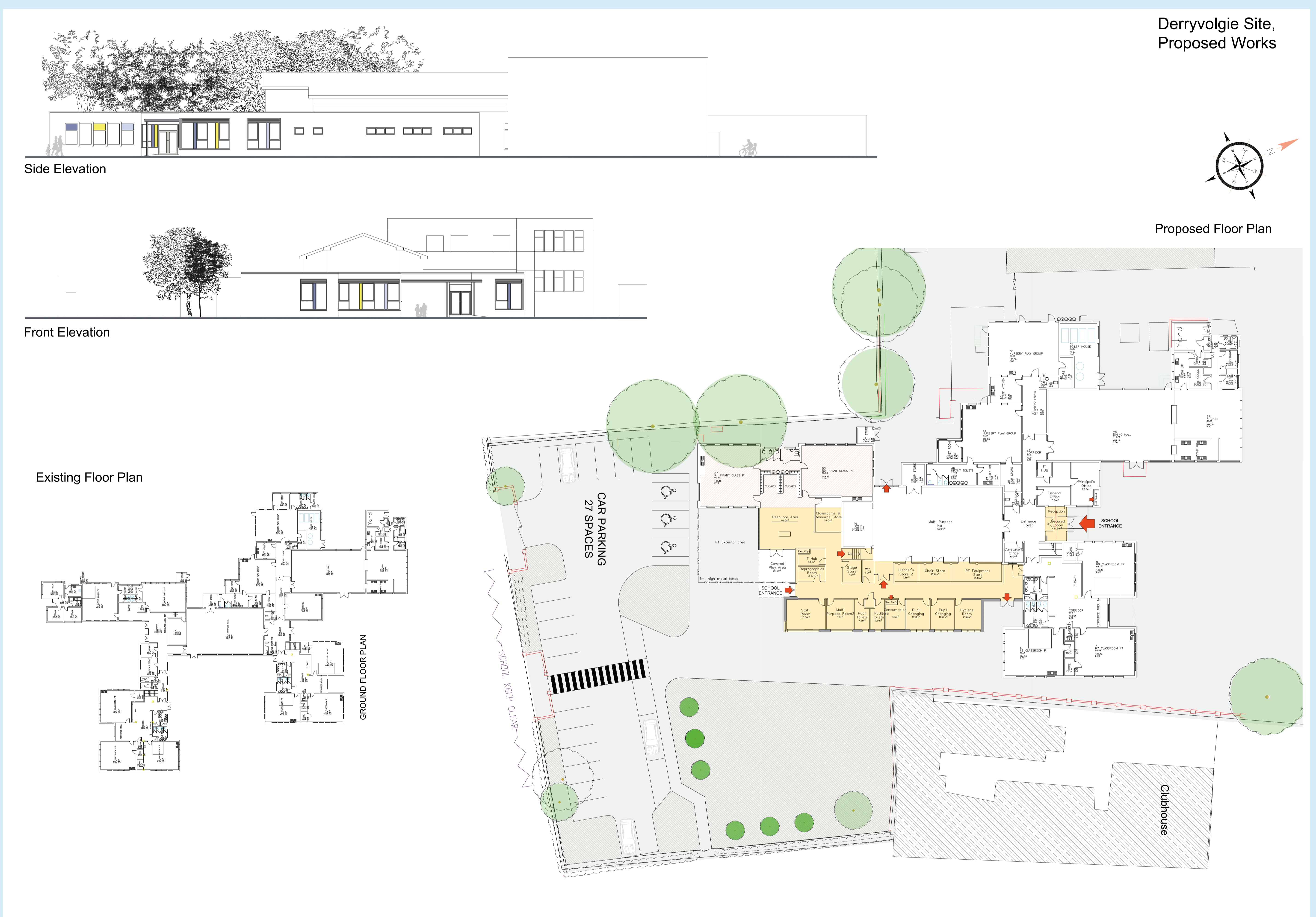
Windsor Site

Proposed Plans and Elevations



Derryvolgie Site

Proposed Plans and Elevations



ST BRIDE'S
PRIMARY SCHOOL